



SINCE 1945
KEYSTONE
CELEBRATING 75 YEARS

XFIT

OUTDOOR FIXTURES

JANUARY 2021

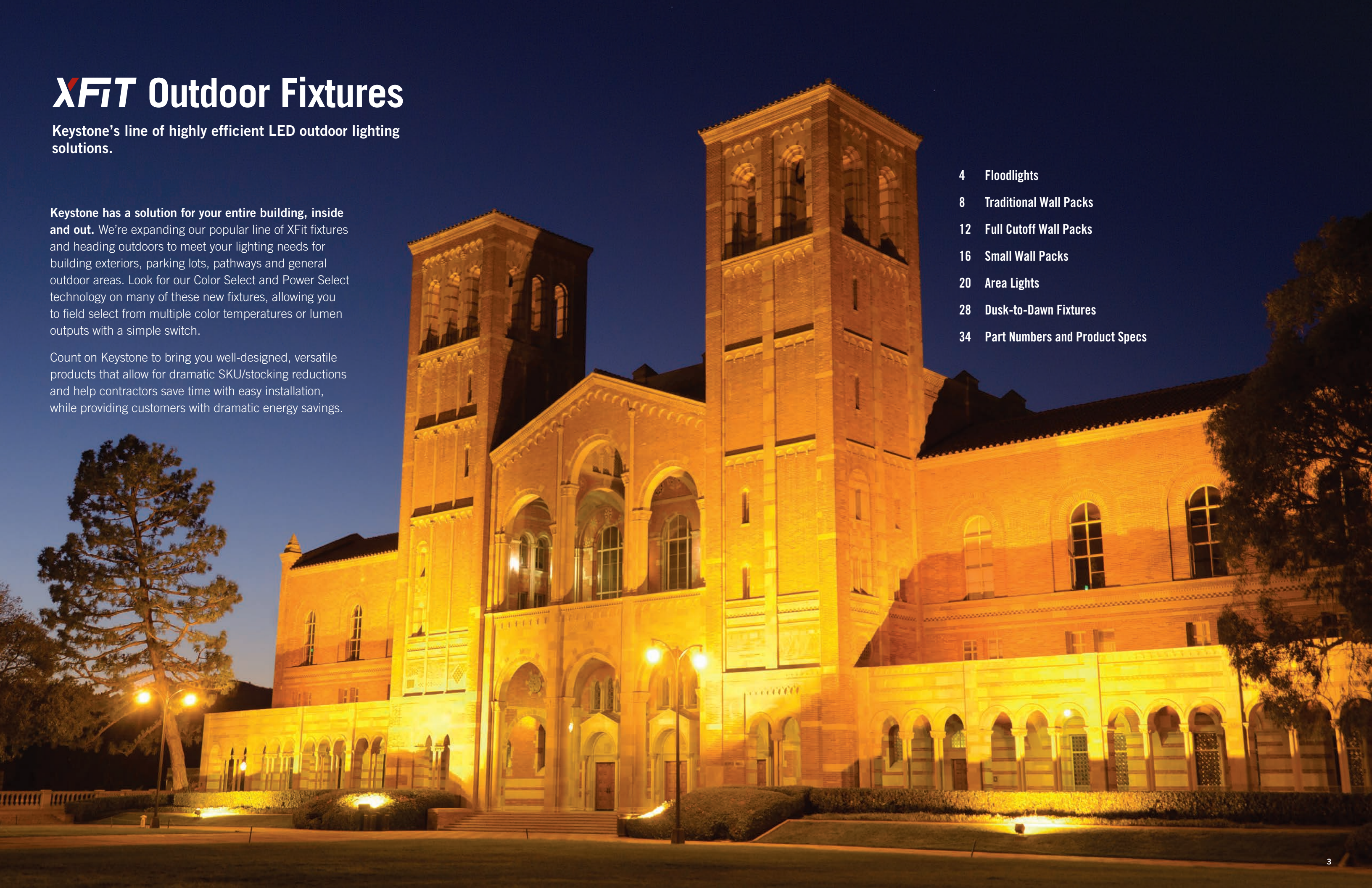
XFIT Outdoor Fixtures

Keystone's line of highly efficient LED outdoor lighting solutions.

Keystone has a solution for your entire building, inside and out. We're expanding our popular line of XFit fixtures and heading outdoors to meet your lighting needs for building exteriors, parking lots, pathways and general outdoor areas. Look for our Color Select and Power Select technology on many of these new fixtures, allowing you to field select from multiple color temperatures or lumen outputs with a simple switch.

Count on Keystone to bring you well-designed, versatile products that allow for dramatic SKU/stocking reductions and help contractors save time with easy installation, while providing customers with dramatic energy savings.

- 4 Floodlights
- 8 Traditional Wall Packs
- 12 Full Cutoff Wall Packs
- 16 Small Wall Packs
- 20 Area Lights
- 28 Dusk-to-Dawn Fixtures
- 34 Part Numbers and Product Specs



XFIT

FLOODLIGHT FIXTURES

Powerful, efficient LED lighting with incredible versatility



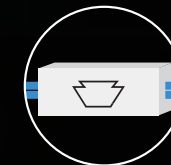
COLOR SELECT TECHNOLOGY

ADJUSTABLE: 3000K - 4000K - 5000K



BUILT-IN DUSK-TO-DAWN PHOTOCELL

AUTOMATICALLY TURNS ON/OFF WHEN DAYLIGHT IS AVAILABLE FOR INCREASED ENERGY SAVINGS (ACTIVATE WITH ON/OFF SWITCH)



BUILT-IN 120-277V KEYSTONE LED DRIVER

PROVIDES 0-10V DIMMING & AMPLE SURGE PROTECTION FOR INCREASED VERSATILITY AND RELIABILITY



CONSOLIDATE SKUS WITH INTERCHANGEABLE MOUNTING OPTIONS INCLUDED

YOKE & KNUCKLE MOUNT INCLUDED FOR 15W, 35W, & 60W; SLIPFITTER & TRUNNION MOUNT INCLUDED FOR 75W & 100W ENSURES UNIVERSAL FIT



Two mounting options included with every fixture

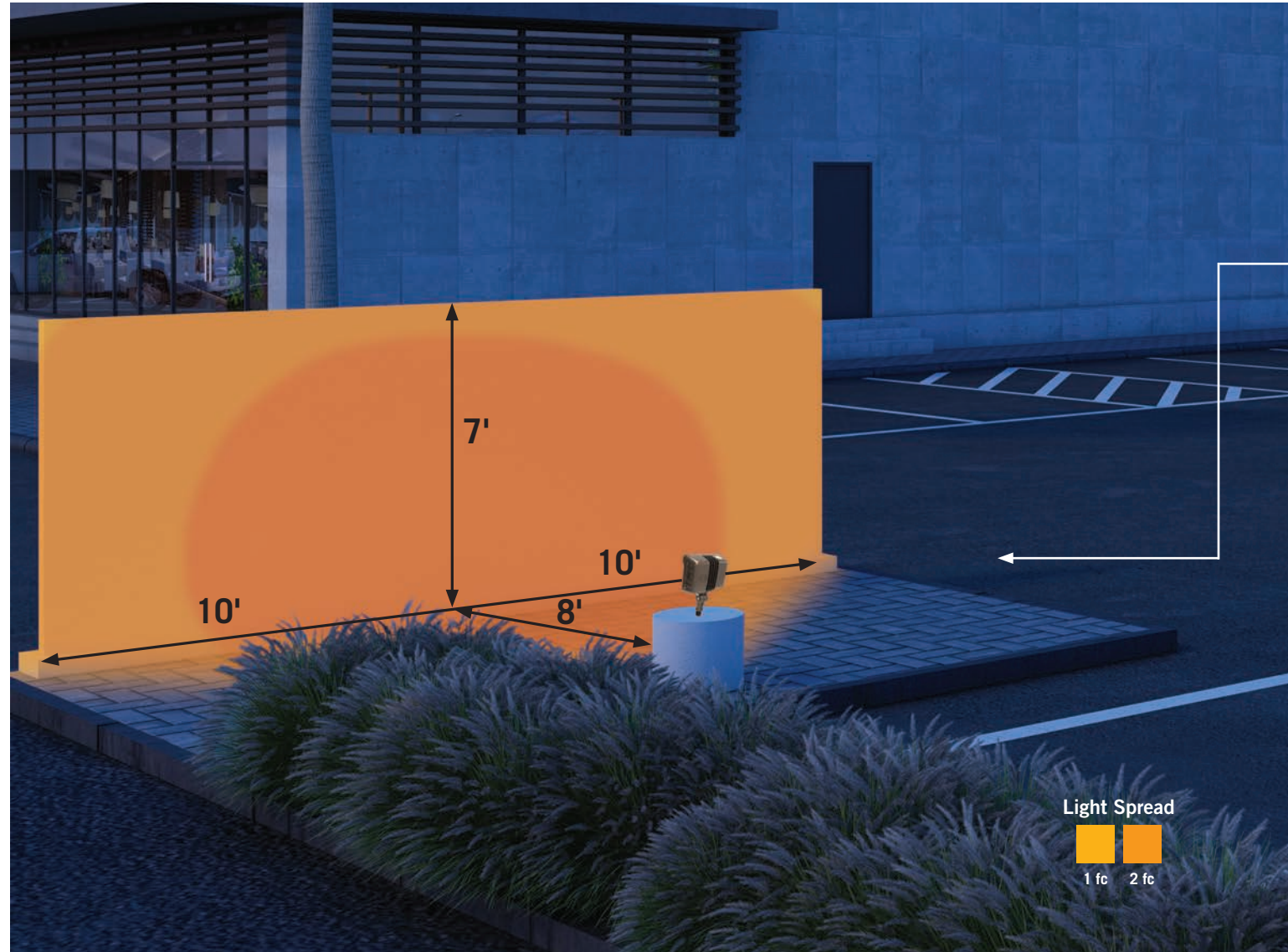


100,000 HOUR LED LIFETIME

IP65 RATED

5 YEAR WARRANTY

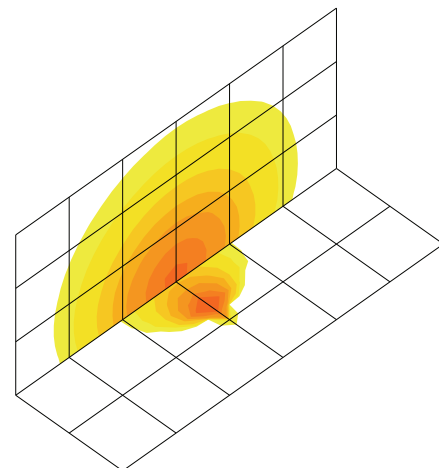
XFIT FLOODLIGHT FIXTURES



FEATURES AND BENEFITS

- Ensures easy installation with two hardware mounting options included
- Reduces SKUs with selectable color temperature
- Adds energy savings with 0-10V dimming
- Ensures proper heat sinking with sturdy and aesthetic design

15W Flood Light:
Ground Mount at 6" above
horizontal; 8' from wall



- 0.1fc
- 0.2fc
- 0.5fc
- 1fc
- 2fc
- 5fc
- 10fc



SHOWN IN BRONZE
WITH YOKE MOUNT



SHOWN IN WHITE
WITH KNUCKLE MOUNT



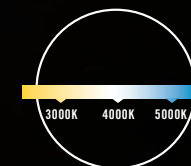
PROTECTIVE TRANSLUCENT
PLUG PROVIDES EASY ACCESS
TO PHOTOCELL AND COLOR
TEMPERATURE DIP SWITCHES

XFIT

TRADITIONAL WALL PACK FIXTURES



Match the appearance of legacy HID fixtures while covering the same footprint



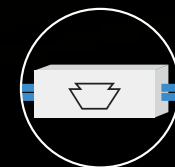
COLOR SELECT TECHNOLOGY

ADJUSTABLE: 3000K - 4000K - 5000K



BUILT-IN DUSK-TO-DAWN PHOTOCELL

AUTOMATICALLY TURNS ON/OFF WHEN DAYLIGHT IS AVAILABLE FOR INCREASED ENERGY SAVINGS (ACTIVATE WITH ON/OFF SWITCH)



BUILT-IN 120-277V KEYSTONE LED DRIVER

PROVIDES 0-10V DIMMING & AMPLE SURGE PROTECTION FOR INCREASED VERSATILITY AND RELIABILITY



EASY INSTALLATION

5 KO ACCESS POINTS (4 SIDES AND 1 BACK) AND CAPTIVE SCREWS INCLUDED

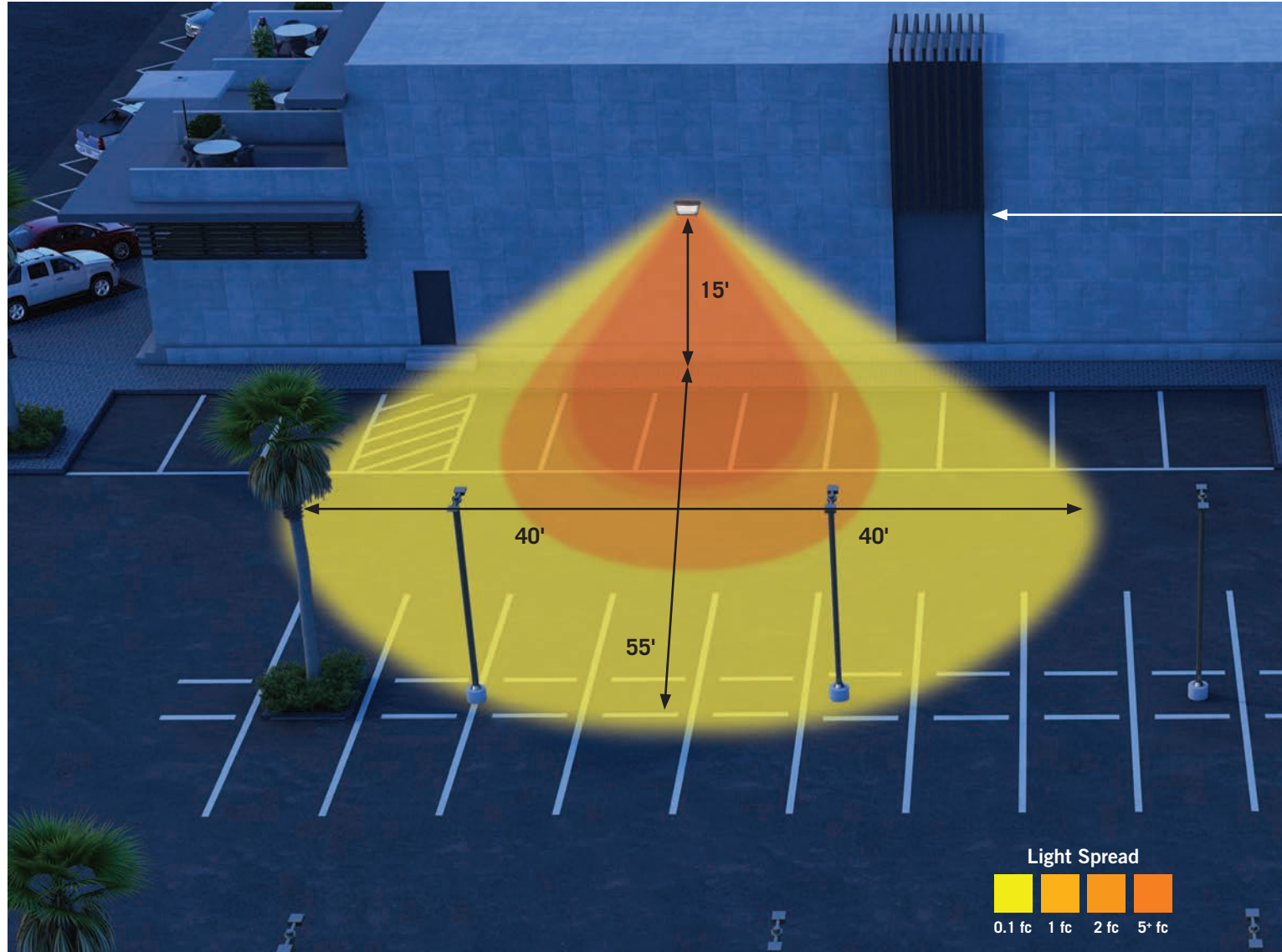


100,000 HOUR
LED LIFETIME

IP65
RATED

5 YEAR
WARRANTY

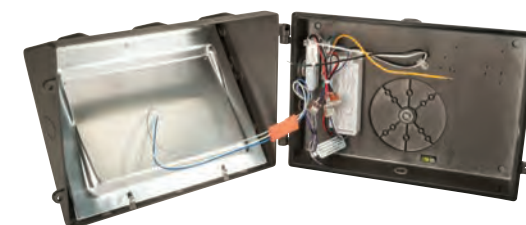
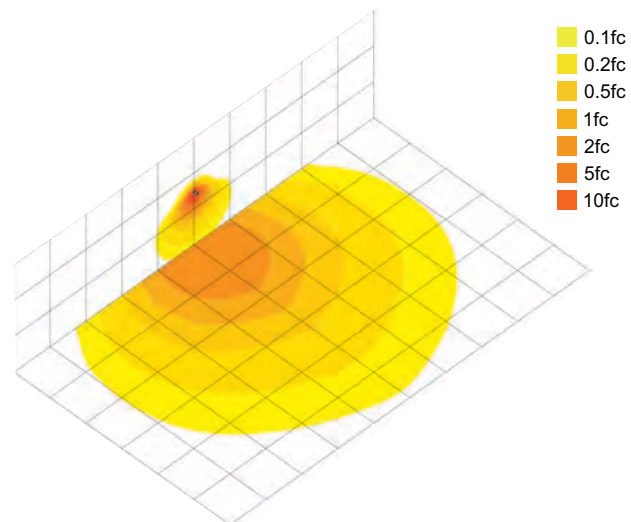
XFIT TRADITIONAL WALL PACKS



FEATURES AND BENEFITS

- Adds energy savings with 0-10V dimming
- Provides uniform light distribution with advanced optical lens technology
- Fits existing legacy product footprint (14" & 17")
- Designed with two dip switches (for photocell and color temperature adjustment) protected by a translucent plug
- Borosilicate Glass lens is high impact resistant and prevents discoloration over time

35W Traditional WP: Building exterior mounted at 15'



PROTECTIVE TRANSLUCENT SWITCH PLUG TO ACCESS PHOTOCELL AND COLOR TEMPERATURE DIP SWITCHES

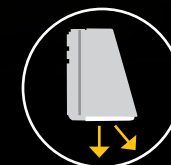
XFIT

FULL CUTOFF WALL PACK FIXTURES

Optimize light distribution and improve the appearance of building exteriors

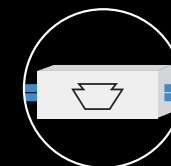


IMPROVED APPEARANCE WITH ARCHITECTURAL FULL CUTOFF DESIGN



OPTIMIZE LIGHT DISTRIBUTION

LIGHT THE SAME AREA WITH FEWER FIXTURES



BUILT-IN 120-277V KEYSTONE LED DRIVER

PROVIDES 0-10V DIMMING & AMPLE SURGE PROTECTION FOR INCREASED VERSATILITY AND RELIABILITY



100,000 HOUR
LED LIFETIME

IP65
RATED

5 YEAR
WARRANTY

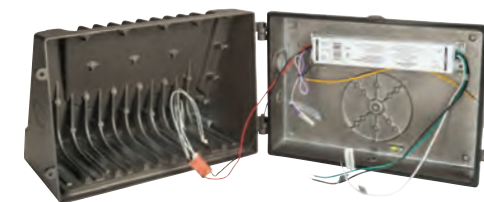
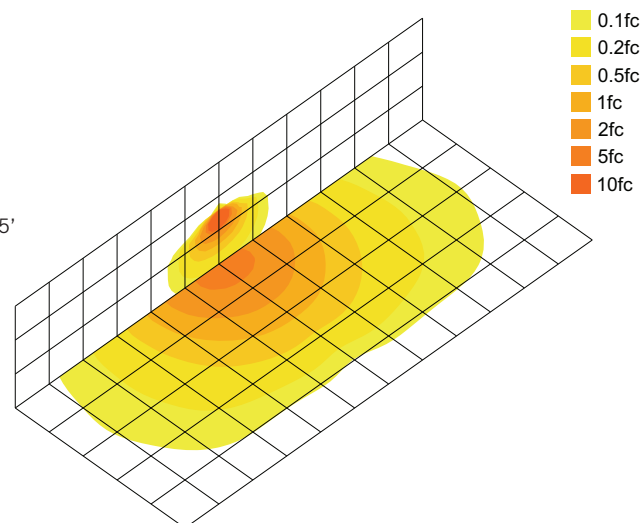
XFIT FULL CUTOFF WALL PACKS



FEATURES AND BENEFITS

- Eliminates undesirable sky glow and glare with dark sky friendly performance
- Covers the existing footprint of mid-size legacy HID fixtures with an updated design, while hiding any unsightly marks and fading
- Increases control and energy efficiency with photocell accessory (available separately)
- Provides wide light distribution with advanced optical lens technology, ideal for increased fixture spacing and uniformity

40W Full Cutoff WP:
Building exterior mounted at 15'

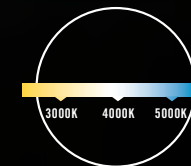


SIDE OPENING FOR EASY ACCESS



XFIT | SMALL LOW PROFILE WALL PACK FIXTURES

Flexible mounting virtually
anywhere with a compact design



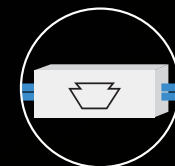
COLOR SELECT TECHNOLOGY (on select models)

ADJUSTABLE: 3000K - 4000K - 5000K



BUILT-IN DUSK-TO-DAWN PHOTOCELL

AUTOMATICALLY TURNS ON/OFF WHEN DAYLIGHT IS AVAILABLE FOR INCREASED ENERGY SAVINGS (ACTIVATE WITH ON/OFF SWITCH)



BUILT-IN 120-277V KEYSTONE LED DRIVER

PROVIDES 0-10V DIMMING & AMPLE SURGE PROTECTION FOR INCREASED VERSATILITY AND RELIABILITY

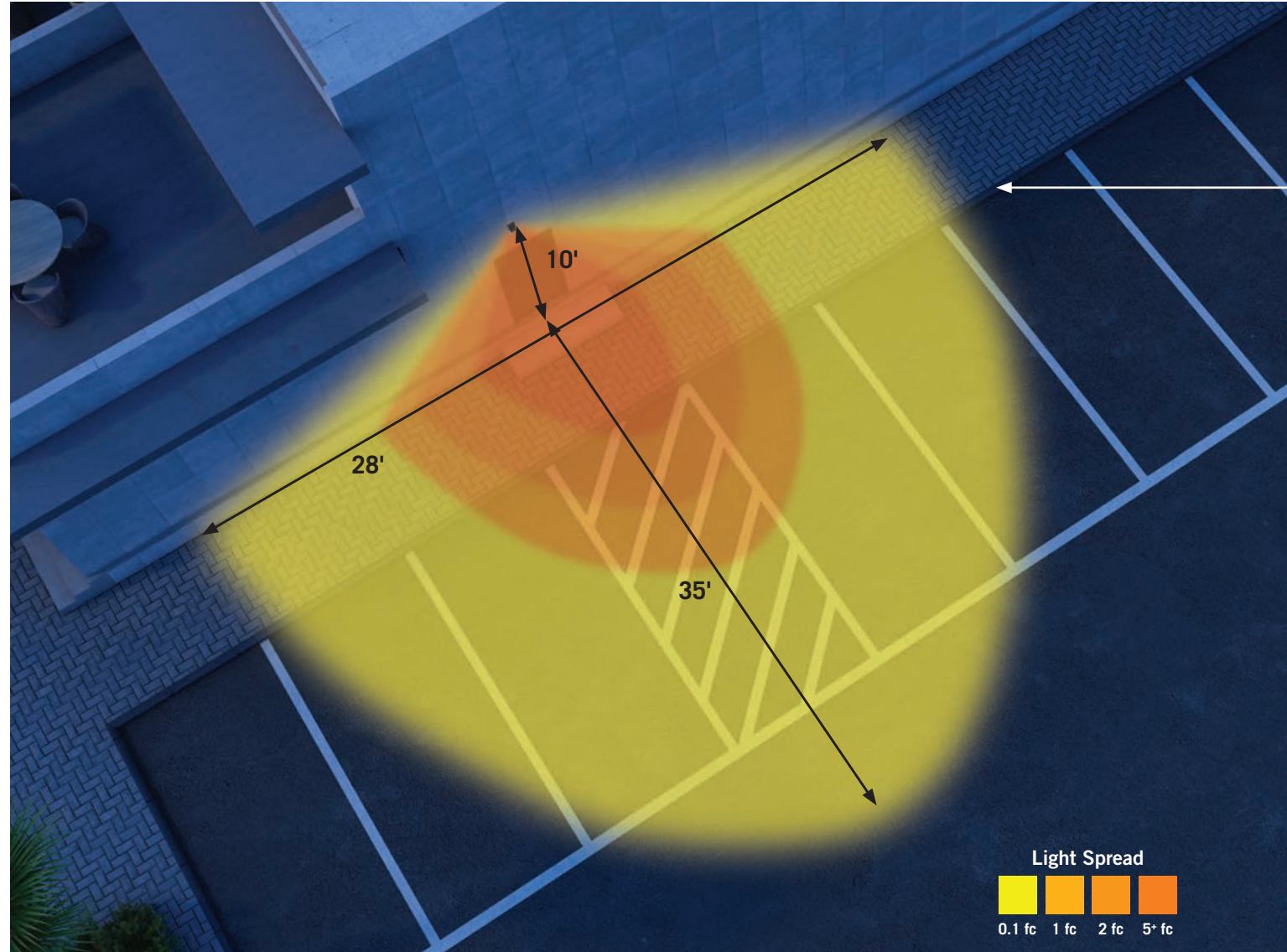


100,000 HOUR
LED LIFETIME

IP65
RATED

5 YEAR
WARRANTY

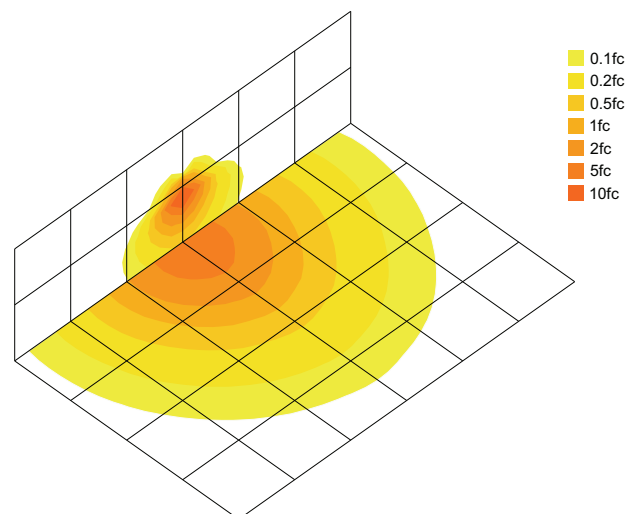
XFIT SMALL LOW PROFILE WALL PACKS



FEATURES AND BENEFITS

- Meets general safety and security illumination needs with a uniform vertical and horizontal light distribution pattern
- Ensures reliable operation with a Keystone LED dimming driver
- Provides ADA compliance with low profile housing (less than 4" deep)
- Reduces glare at low mounting height applications with advanced poly carb lens technology
- Designed with two dip switches (protected by a translucent plug) to disable the photocell and adjust color temperature as needed.

20W Small Wall Pack: Building exterior mounted at 10'



SHOWN IN BRONZE



SHOWN IN WHITE



SHOWN IN BLACK



PROTECTIVE TRANSLUCENT SWITCH PLUG TO ACCESS PHOTOCELL AND COLOR TEMPERATURE DIP SWITCHES



XFiT | AREA LIGHTS

Low profile, energy efficient, flexible solutions

A full portfolio of area lights for any job.

Select units feature Keystone's Power Select options, creating simplified stocking and a reduction of SKU inventory by up to 90%.



POWER SELECT TECHNOLOGY (on select models)
REDUCE SKUS AND INCREASE BOTH FLEXIBILITY AND CONVENIENCE WITH FIELD ADJUSTABLE POWER OUTPUTS (3 OPTIONS)



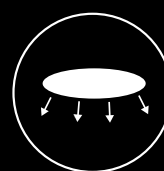
BUILT-IN 120-277V KEYSTONE LED DRIVER
PROVIDES 0-10V DIMMING & AMPLE SURGE PROTECTION FOR INCREASED VERSATILITY AND RELIABILITY



INTEGRAL LATCH DESIGN FOR HASSLE FREE HINGED ACCESS TO DRIVER COMPARTMENT



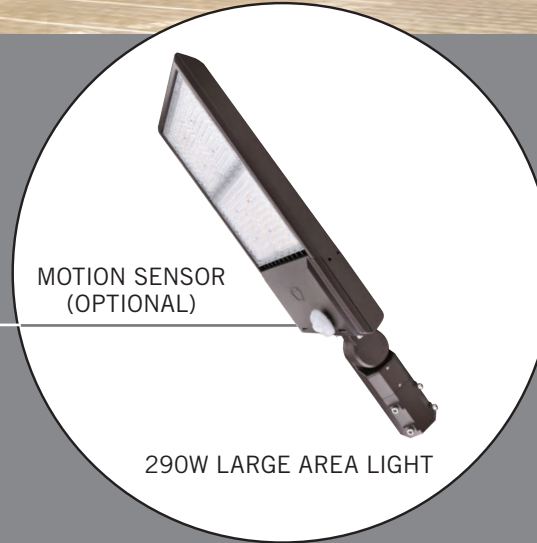
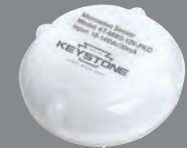
4 CONTRACTOR FRIENDLY MOUNTING OPTIONS SHARED BETWEEN ALL SIZES



FOUR OPTICS TYPES AVAILABLE (III & V STOCK, II & IV 7-10 DAYS LT)



XFIT AREA LIGHTS

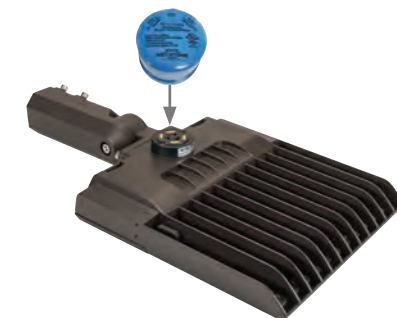


FEATURES AND BENEFITS:

- Field installable, screw-in motion sensor (optional)
- Compact, low profile design delivers high performance illumination and improves application site aesthetics
- Integrated NEMA/ANSI C136.10 3-pin twist-lock receptacle with shorting cap, standard on all fixtures, simplifies ordering requirements
- Trusted Keystone 0-10V driver for smooth dimming and energy savings
- Available in 120-277V and 480V
- Heavy-duty, die-cast aluminum housing with ample heat sinking for enhanced thermal performance
- Superior surge protection with 6kV built-in plus 10kV external protection



SHOWN OPEN WITH
KEYSTONE DRIVER



3-PIN NEMA TWIST-LOCK
RECEPTACLE

XFIT SPECIAL STOCKING OPTIONS

Unique stocking options — all components in one simple package



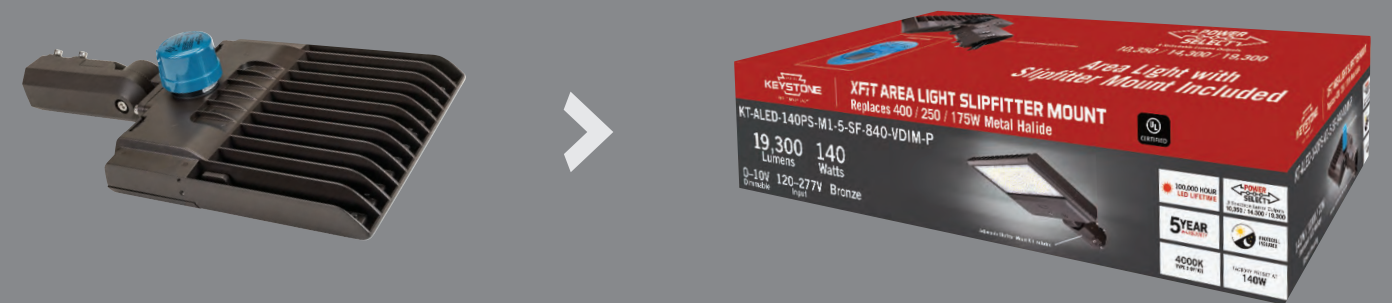
TYPE III OPTIC PACKAGE

- Power Select - field adjustable wattage options: 140W / 100W / 70W medium fixture
- Includes adjustable pole mount kit and photocell with Type III fixture optics
- 12V AUX tap
- Available in 4000K or 5000K
- 6kV built-in plus 10kV external surge protection
- Ideal for multi-headed pole applications



TYPE V OPTIC PACKAGE

- Power Select - field adjustable wattage options: 140W / 100W / 70W medium fixture
- Includes pre-installed slipfitter mount kit and photocell with Type V fixture optics
- 12V AUX tap
- Available in 4000K or 5000K
- 6kV built-in plus 10kV external surge protection
- Ideal for single-headed and general flood applications



PACKAGE INCLUDES:

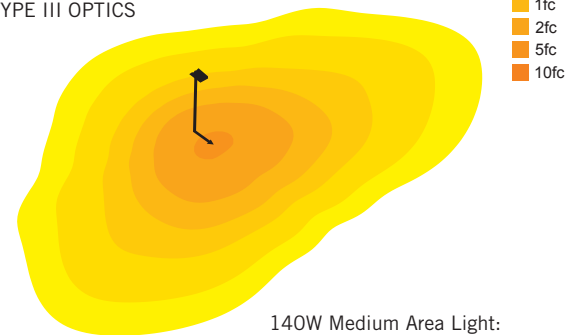


DAYLIGHT SENSOR AND SHORTING CAP



ADJUSTABLE POLE MOUNT KIT

TYPE III OPTICS



PACKAGE INCLUDES:

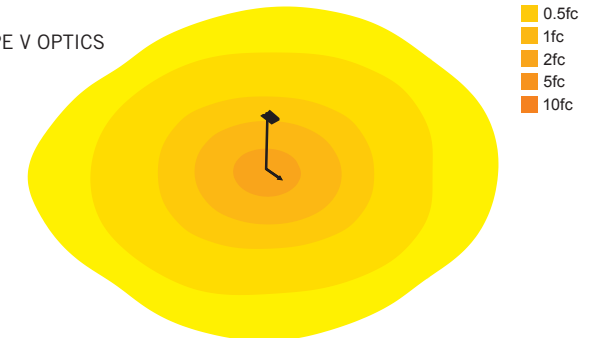


DAYLIGHT SENSOR AND SHORTING CAP



SLIPFITTER MOUNT KIT (PRE-INSTALLED)

TYPE V OPTICS



XFIT AREA LIGHTS PROJECT OPTIONS

Customize your fixture package in 4 easy steps



1. Select Fixture

SMALL:
70W / 9800 LUMENS
110W / 14000 LUMENS



MEDIUM:
140W / 19600 LUMENS

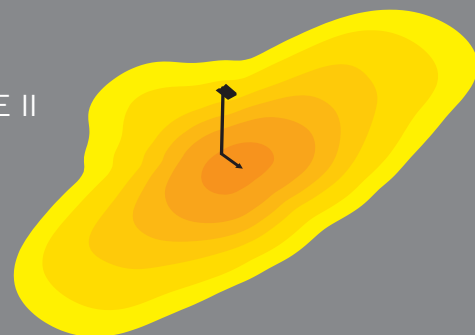


LARGE:
210W / 29400 LUMENS
290W / 40600 LUMENS

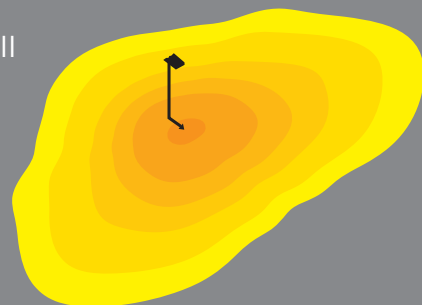


2. Select Optic

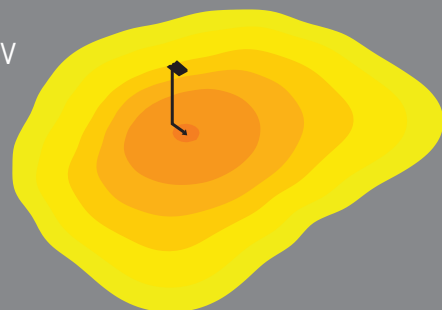
TYPE II



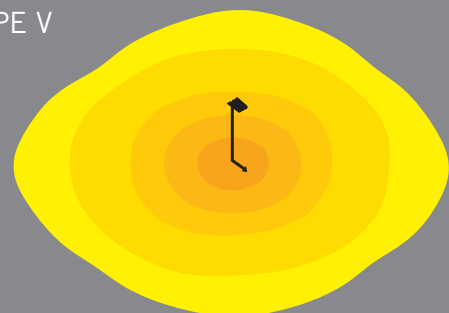
TYPE III



TYPE IV



TYPE V



3. Select Mount

ADJUSTABLE
POLE MOUNT



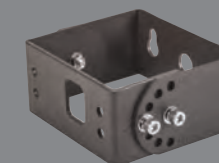
FIXED POLE
MOUNT



SLIPFITTER
MOUNT



TRUNNION
MOUNT



4. Select Sensor

MOTION
SENSOR



DAYLIGHT
SENSOR



Select Additional Accessories:

- GLARE SHIELDS - Page 41
- POLE ACCESSORIES - Page 42



XFIT | DUSK-TO-DAWN FIXTURES

Functional style to withstand the rigors of commercial applications

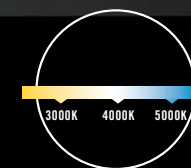
This dusk-to-dawn fixture offers multi-purpose general area lighting options in a common aesthetic. To maximize energy savings, it also features daylight sensing capability through a standard NEMA twist-lock receptacle, allowing the units to dim down in stages and has an optional motion sensor available.



100,000 HOUR
LED LIFETIME

IP65
RATED

5 YEAR
WARRANTY



COLOR SELECT TECHNOLOGY (on select models)

ADJUSTABLE: 3000K - 4000K - 5000K



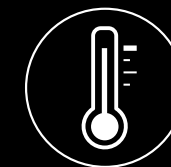
POWER SELECT TECHNOLOGY (on select models)

REDUCE SKUS AND INCREASE BOTH FLEXIBILITY AND CONVENIENCE WITH FIELD ADJUSTABLE POWER OUTPUTS (3 OPTIONS)



BUILT-IN DUSK-TO-DAWN PHOTOCELL

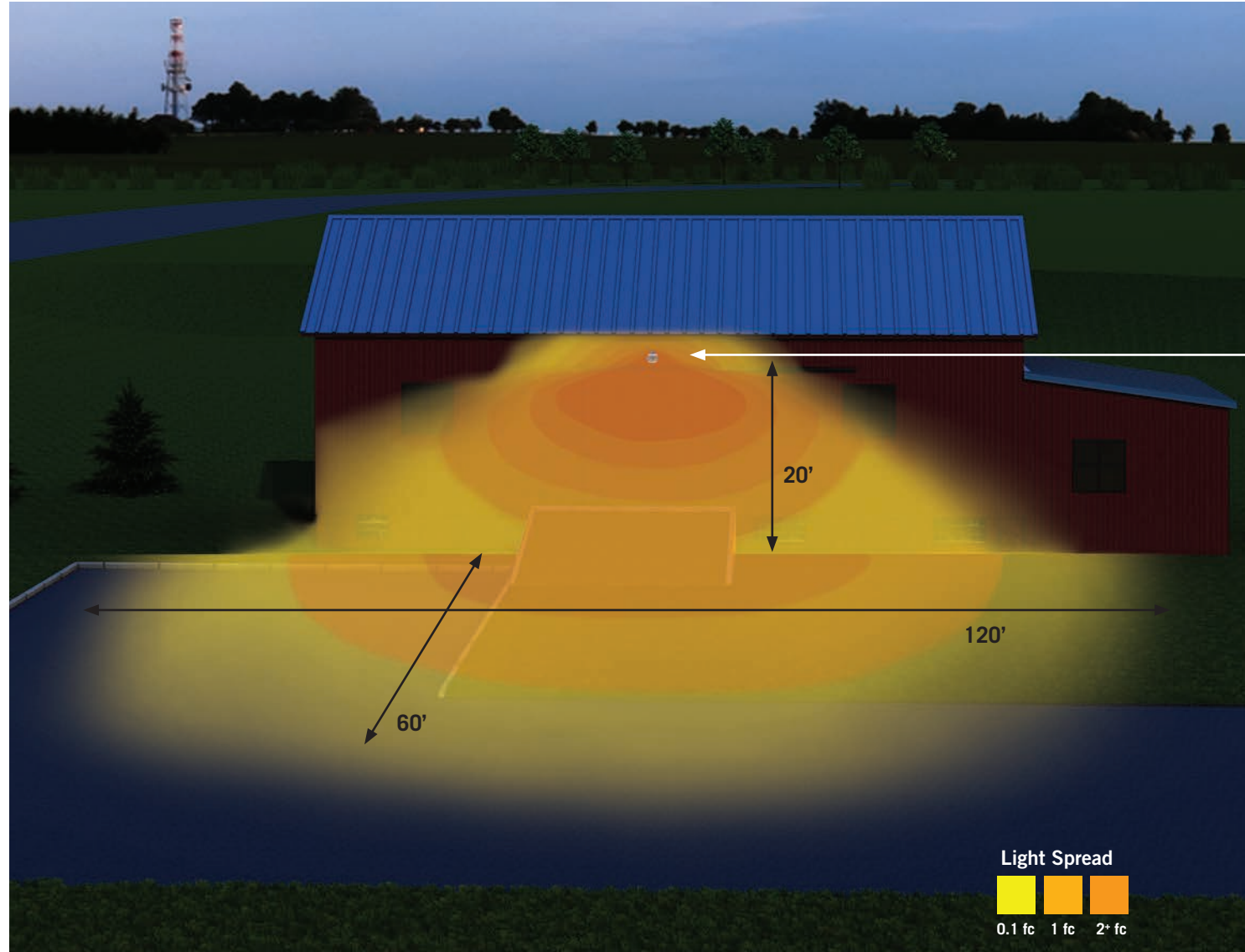
AUTOMATICALLY TURNS ON/OFF WHEN DAYLIGHT IS AVAILABLE FOR INCREASED ENERGY SAVINGS (ACTIVATE WITH ON/OFF SWITCH)



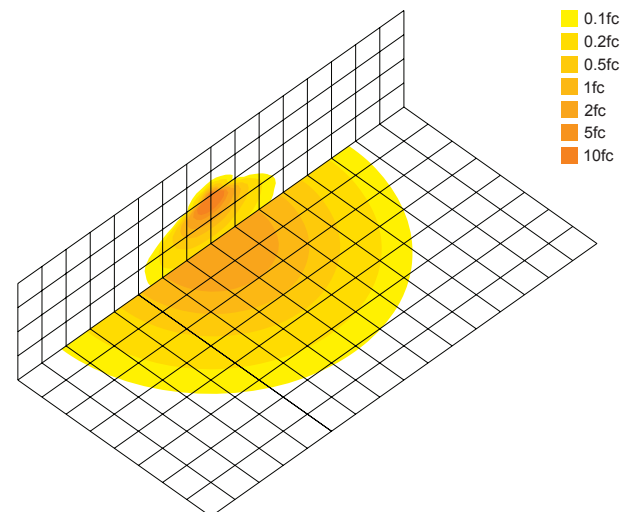
50C° MAX AMBIENT TEMPERATURE

DESIGNED TO HANDLE HARSH CONDITIONS WITH AMPLE HEAT SINKING

XFIT DUSK-TO-DAWN FIXTURES



60W Dusk-to-Dawn Light:
Barn exterior mounted at 20'



COLOR
SELECT
SWITCH



60W DUSK-TO-DAWN LIGHT

POWER
SELECT
SWITCH



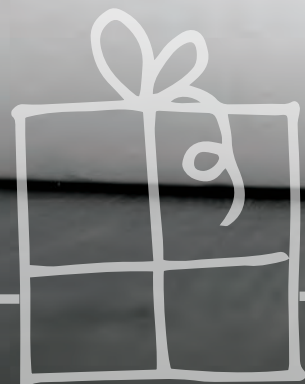
FEATURES AND BENEFITS

- Compact design matches appearance and light distribution of legacy HID, optimized for one to one replacements
- Impact resistant and highly diffused poly carb lens with anti-yellowing agent offers reduced glare for low mounting height applications
- NEMA 3-Pin photocell included
- Ensures reliable operation with a Keystone LED dimming driver
- Heavy-duty, die-cast aluminum housing with ample heat sinking for enhanced thermal performance



DUSK-TO-DAWN FIXTURE
WITH PHOTOCELL INCLUDED

Ordering a sample is always
easy.



keystonetech.com/samples



samples@keystonetech.com



800.464.2680

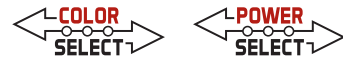


Lighting Layouts

Keystone offers complimentary lighting layout services for our products, to help take the next step in bringing your project to life. We can provide answers to your lighting questions to determine how many fixtures you need, what types of lamps are best for your applications, and how to save the maximum amount of energy, all within budget. By utilizing industry leading lighting layout design software, we provide accurate and dependable application renderings. For new construction or retrofit, simply provide Keystone with a few key project details, and our lighting designers will get to work on your request.

Visit: keystonetech.com/lighting-layout

Floodlights

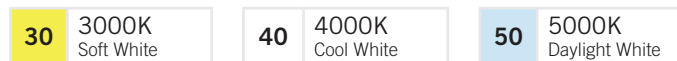


CATALOG NUMBER	WATTAGE	METAL HALIDE EQUIVALENT WATTAGE	LUMENS	EFFICACY	SELECTABLE COLOR TEMPS	INPUT VOLTAGE	DIMMING	HOUSING COLOR	PHOTOCELL INCLUDED	MOUNTING INCLUDED
KT-FLED15-R1A-UNV-8CSB-VDIM	15W	70W	2100	140 lm/W	☐☐☐	120-277V	0-10V	Bronze	Yes	Universal 1/2" Knuckle or Yoke
			2175	145 lm/W						
			1920	128 lm/W						
KT-FLED15-R1A-UNV-8CSB-VDIM-W	15W	70W	2100	140 lm/W	☐☐☐	120-277V	0-10V	White	Yes	Universal 1/2" Knuckle or Yoke
			2175	145 lm/W						
			1920	128 lm/W						
KT-FLED35-R1A-UNV-8CSB-VDIM	35W	150-175W	4900	140 lm/W	☐☐☐	120-277V	0-10V	Bronze	Yes	Universal 1/2" Knuckle or Yoke
			5075	145 lm/W						
			4480	128 lm/W						
KT-FLED35-R1A-UNV-8CSB-VDIM-W	35W	150-175W	4900	140 lm/W	☐☐☐	120-277V	0-10V	White	Yes	Universal 1/2" Knuckle or Yoke
			5075	145 lm/W						
			4480	128 lm/W						
KT-FLED60-R1A-UNV-8CSB-VDIM	60W	250W	8040	134 lm/W	☐☐☐	120-277V	0-10V	Bronze	Yes	Universal 1/2" Knuckle or Yoke
			8580	143 lm/W						
			7320	122 lm/W						
KT-FLED60-R1A-UNV-8CSB-VDIM-W	60W	250W	8040	134 lm/W	☐☐☐	120-277V	0-10V	White	Yes	Universal 1/2" Knuckle or Yoke
			8580	143 lm/W						
			7320	122 lm/W						
KT-FLED75-R1A-UNV-8CSB-VDIM	75W	250-320W	10050	134 lm/W	☐☐☐	120-277V	0-10V	Bronze	Yes	Universal 2 3/8" Slipfitter or Trunnion
			9150	122 lm/W						
KT-FLED100-R1A-UNV-8CSB-VDIM	100W	400W	13400	134 lm/W	☐☐☐	120-277V	0-10V	Bronze	Yes	Universal 2 3/8" Slipfitter or Trunnion
			14300	143 lm/W						
			12200	122 lm/W						

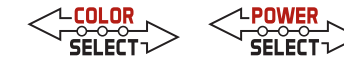
FIXTURE ACCESSORIES FOR FLOOD LIGHTS

FLOOD LIGHT SURFACE MOUNT KIT KT-FLED-SM-1-KIT	➔		➔	
4" ROUND FLOOD LIGHT JUNCTION BOX COVER KT-FLED-RC-4	➔		➔	
4" ROUND FLOOD LIGHT JUNCTION BOX COVER KT-FLED-RC-4-W	➔		➔	

The products on this page have Color Select technology and can be switched between these color temperatures:



Traditional Wall Packs

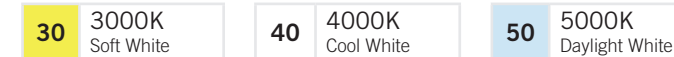


CATALOG NUMBER	WATTAGE	METAL HALIDE EQUIVALENT WATTAGE	LUMENS	EFFICACY	SELECTABLE COLOR TEMPS	INPUT VOLTAGE	DIMMING	HOUSING COLOR	PHOTOCELL INCLUDED	NOMINAL WIDTH
KT-WPLED35-M1-8CSB-VDIM	35W	150W	4690	134 lm/W	☐☐☐	120-277V	0-10V	Bronze	Yes	14"
			5040	144 lm/W						
			4865	139 lm/W						
KT-WPLED55-M1-8CSB-VDIM	55W	175-250W	7370	134 lm/W	☐☐☐	120-277V	0-10V	Bronze	Yes	14"
			7920	144 lm/W						
			7645	139 lm/W						
KT-WPLED80-M1-8CSB-VDIM	80W	250-320W	10800	135 lm/W	☐☐☐	120-277V	0-10V	Bronze	Yes	14"
			11600	145 lm/W						
			11200	140 lm/W						
KT-WPLED120-L1-8CSB-VDIM	120W	400W	15600	130 lm/W	☐☐☐	120-277V	0-10V	Bronze	Yes	17"
			16800	140 lm/W						
			16200	135 lm/W						

FIXTURE ACCESSORIES FOR TRADITIONAL WALL PACKS

KTSP-10KV-C	➔		➔	10KV SURGE PROTECTOR, COMPACT DESIGN
-------------	---	--	---	--------------------------------------

The products on this page have Color Select technology and can be switched between these color temperatures:





Full Cutoff Wall Packs



CATALOG NUMBER	WATTAGE	METAL HALIDE EQUIVALENT WATTAGE	LUMENS	EFFICACY	AVAILABLE COLOR TEMPS	INPUT VOLTAGE	DIMMING	HOUSING COLOR	PHOTOCELL INCLUDED	NOMINAL WIDTH
KT-WPLED40-M2-8xx-VDIM	40W	175W	5200	130 lm/W	<input type="checkbox"/> <input type="checkbox"/>	120-277V	0-10V	Bronze	No	14"
KT-WPLED60-M2-8xx-VDIM	60W	250W	7800	130 lm/W	<input type="checkbox"/> <input type="checkbox"/>	120-277V	0-10V	Bronze	No	14"
KT-WPLED100-M2-8xx-VDIM	100W	400W	13000	130 lm/W	<input type="checkbox"/> <input type="checkbox"/>	120-277V	0-10V	Bronze	No	14"

FIXTURE ACCESSORIES FOR FULL CUTOFF WALL PACKS

KTSP-10KV-C		10KV SURGE PROTECTOR, COMPACT DESIGN
KTSP-WPLED-PS-UV-KO		WALL PACK BUTTON PHOTOCELL

If xx is used in a product catalog number, select an available color temperature and replace xx with the first two digits of that temperature when ordering.

40	4000K Cool White	50	5000K Daylight White
----	---------------------	----	-------------------------

Small Low Profile Wall Packs



COLOR SELECT

CATALOG NUMBER	WATTAGE	METAL HALIDE EQUIVALENT WATTAGE	LUMENS	EFFICACY	SELECTABLE COLOR TEMPS	INPUT VOLTAGE	DIMMING	HOUSING COLOR	PHOTOCELL INCLUDED
KT-WPLED20-S1-8CSB-VDIM	20W	50-70W MH	2500	125 lm/W	<input type="checkbox"/> <input type="checkbox"/> <input type="checkbox"/>	120-277V	0-10V	Bronze	Yes
			2700	135 lm/W					
			2600	130 lm/W					
KT-WPLED20-S1-8CSB-VDIM-B	20W	50-70W MH	2500	125 lm/W	<input type="checkbox"/> <input type="checkbox"/> <input type="checkbox"/>	120-277V	0-10V	Black	Yes
			2700	135 lm/W					
			2600	130 lm/W					
KT-WPLED20-S1-8CSB-VDIM-W	20W	50-70W MH	2500	125 lm/W	<input type="checkbox"/> <input type="checkbox"/> <input type="checkbox"/>	120-277V	0-10V	White	Yes
			2700	135 lm/W					
			2600	130 lm/W					

DEDICATED COLOR

CATALOG NUMBER	WATTAGE	METAL HALIDE EQUIVALENT WATTAGE	LUMENS	EFFICACY	AVAILABLE COLOR TEMPS	INPUT VOLTAGE	DIMMING	HOUSING COLOR	PHOTOCELL INCLUDED
KT-WPLED20-S1-840-VDIM	20W	50-70W	2500	125 lm/W	4000K	120-277V	0-10V	Bronze	Yes
KT-WPLED20-S1-850-VDIM	20W	50-70W	2500	125 lm/W	5000K	120-277V	0-10V	Bronze	Yes

FIXTURE ACCESSORIES FOR SMALL LOW PROFILE WALL PACKS

KTSP-10KV-C		10KV SURGE PROTECTOR, COMPACT DESIGN
-------------	---	--------------------------------------

The products on this page with Color Select technology can be switched between these color temperatures:

30	3000K Soft White	40	4000K Cool White	50	5000K Daylight White
----	---------------------	----	---------------------	----	-------------------------

Special Stocking Area Lights



Premium package includes a medium size 70W / 100W / 140W Power Select fixture body, mounting kit, and a 3-pin twist-lock photocell (with 7-pin receptacle and shorting cap) in a full color box. An additional mounting kit is not required with these packages.

TYPE III OPTIC PACKAGE

PACKAGE INCLUDES:

DAYLIGHT SENSOR
AND SHORTING CAP

ADJUSTABLE POLE
MOUNT KIT

CATALOG NUMBER	OPTICS TYPE	WATTAGE	METAL HALIDE EQUIVALENT WATTAGE	LUMENS	EFFICACY	AVAILABLE COLOR TEMPS	INPUT VOLTAGE	DIMMING	CRI	HOUSING COLOR
KT-ALED140PS-M1-3-PM-8xx-VDIM-P	III	140W	175W-400W	19600	140 lm/W	<input type="checkbox"/> <input type="checkbox"/>	120-277V	0-10V	>80	Bronze
		100W		14300						
		70W		10200						

TYPE V OPTIC PACKAGE

PACKAGE INCLUDES:

DAYLIGHT SENSOR
AND SHORTING CAP

SLIPFITTER
MOUNT KIT

CATALOG NUMBER	OPTICS TYPE	WATTAGE	METAL HALIDE EQUIVALENT WATTAGE	LUMENS	EFFICACY	AVAILABLE COLOR TEMPS	INPUT VOLTAGE	DIMMING	CRI	HOUSING COLOR
KT-ALED140PS-M1-5-SF-8xx-VDIM-P	V	140W	175W-400W	19600	140 lm/W	<input type="checkbox"/> <input type="checkbox"/>	120-277V	0-10V	>80	Bronze
		100W		14300						
		70W		10200						

If xx is used in a product catalog number, select an available color temperature and replace xx with the first two digits of that temperature when ordering.

40
4000K
Cool White

50
5000K
Daylight White

Area Lights



SMALL AREA LIGHTS

FIXTURE DIMENSIONS

LENGTH	WIDTH	HEIGHT
14.06"	9.13"	2.60"

CATALOG NUMBER	OPTICS TYPE *	WATTAGE	METAL HALIDE EQUIVALENT WATTAGE	LUMENS	EFFICACY	AVAILABLE COLOR TEMPS	INPUT VOLTAGE	DIMMING	CRI	HOUSING COLOR **
KT-ALED70-S1-3-NM-8xx-VDIM	III	70W	175-250W	9800	140 lm/W	<input type="checkbox"/> <input type="checkbox"/>	120-277V	0-10V	>80	Bronze
KT-ALED70-S1-5-NM-8xx-VDIM	V									
KT-ALED100-S1-3-NM-8xx-VDIM	III	100W	250-320W	14000	140 lm/W	<input type="checkbox"/> <input type="checkbox"/>	120-277V	0-10V	>80	Bronze
KT-ALED100-S1-5-NM-8xx-VDIM	V									

MEDIUM AREA LIGHTS

FIXTURE DIMENSIONS

LENGTH	WIDTH	HEIGHT
14.21"	13.11"	2.76"

CATALOG NUMBER	OPTICS TYPE *	WATTAGE	METAL HALIDE EQUIVALENT WATTAGE	LUMENS	EFFICACY	AVAILABLE COLOR TEMPS	INPUT VOLTAGE	DIMMING	CRI	HOUSING COLOR **
KT-ALED140-M1-3-NM-8xx-VDIM	III	140W	400W	19600	140 lm/W	<input type="checkbox"/> <input type="checkbox"/>	120-277V	0-10V	>80	Bronze
KT-ALED140-M1-5-NM-8xx-VDIM	V									
KT-ALED140HV-M1-3-NM-8xx-VDIM	III	140W	400W	19600	140 lm/W	<input type="checkbox"/> <input type="checkbox"/>	277-480V	0-10V	>80	Bronze
KT-ALED140HV-M1-5-NM-8xx-VDIM	V									

LARGE AREA LIGHTS

FIXTURE DIMENSIONS

LENGTH	WIDTH	HEIGHT
21.93"	13.11"	2.76"

CATALOG NUMBER	OPTICS TYPE *	WATTAGE	METAL HALIDE EQUIVALENT WATTAGE	LUMENS	EFFICACY	AVAILABLE COLOR TEMPS	INPUT VOLTAGE	DIMMING	CRI	HOUSING COLOR **
KT-ALED210-L1-3-NM-8xx-VDIM	III	210W	400-750W	29400	140 lm/W	<input type="checkbox"/> <input type="checkbox"/>	120-277V	0-10V	>80	Bronze
KT-ALED210-L1-5-NM-8xx-VDIM	V									
KT-ALED290-L1-3-NM-8xx-VDIM	III	290W	1000W	40600	140 lm/W	<input type="checkbox"/> <input type="checkbox"/>	120-277V	0-10V	>80	Bronze
KT-ALED290-L1-5-NM-8xx-VDIM	V									
KT-ALED290HV-L1-3-NM-8xx-VDIM	III	290W	1000W	40600	140 lm/W	<input type="checkbox"/> <input type="checkbox"/>	277-480V	0-10V	>80	Bronze
KT-ALED290HV-L1-5-NM-8xx-VDIM	V									

Type II and Type IV optics available with short lead time.

* Fixtures with Type 2 (II) and Type 4 (IV) optics are available and assembled to order. Lead times may apply. See spec sheets for full ordering code details.
 ** Fixtures/Mounts with alternate housing colors are available and made to order. Extended lead times apply. See spec sheets for full ordering code details.

If xx is used in a product catalog number, select an available color temperature and replace xx with the first two digits of that temperature when ordering.

40
4000K
Cool White

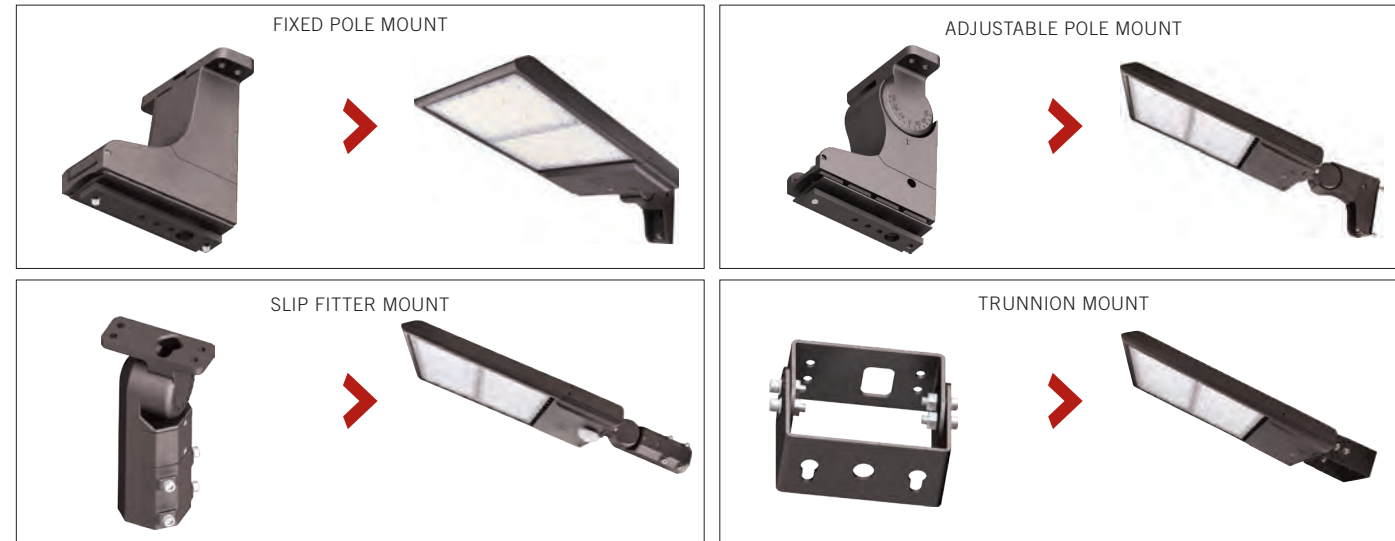
50
5000K
Daylight White

Area Lights



MOUNTING KITS (One Required Per Fixture)

CATALOG NUMBER	DESCRIPTION	HOUSING COLOR	FEATURES
KT-ALED-PM-1-KIT	Fixed pole mount kit; suitable for round or square poles	Bronze	Easy access plate design
KT-ALED-PMA-1-KIT	Adjustable pole mount kit; suitable for round or square poles	Bronze	Adjustable angle design with easy access plate
KT-ALED-SF-1-KIT	Slip fitter mount kit; fits 2 3/8" tenon	Bronze	Easy access plate design
KT-ALED-TM-1-KIT	Trunnion mount kit	Bronze	N/A



OPTIC TYPES

<p>TYPE II</p> <p>Provides a lateral distribution of light; ideal for walkways, on-ramps, and other pathways</p>	<p>TYPE III</p> <p>Projects light outward; ideal for roadways, general parking areas, and any large application where general lighting is required</p>
<p>TYPE IV</p> <p>Semi-circular shape provides a forward throw light; ideal for perimeter applications such as parking areas and sides of buildings</p>	<p>TYPE V</p> <p>Produces a circular distribution that has the same intensity at all angles; ideal for intersections, commercial parking lot lighting, and any areas where sufficient, evenly distributed light is necessary</p>

Area Lights



FIXTURE ACCESSORIES

CATALOG NUMBER	DESCRIPTION
Performance Accessories	
KT-ALED-GS-S1-KIT	Reversible glare shield kit for small area light fixtures; bronze housing
KT-ALED-GS-M1-KIT	Reversible glare shield kit for medium area light fixtures; bronze housing
KT-ALED-GS-L1-KIT	Reversible glare shield kit for large area light fixtures; bronze housing
KTSP-10KV-C	10kV surge protector; compact design
Control Accessories	
KT-TLP-UV-3PN	NEMA 3-pin photocell 120-277V; 1800VA max; blue housing
KT-TLP-HV-3PN	NEMA 3-pin photocell 200-480V; 1800VA max; yellow housing
KT-RSC-7PN	NEMA 7-pin receptacle and shorting cap; black housing
KTS-MW3-12V-PKO /X	Microwave sensor for up to 30' mounting height with pre-set standby level of 50% after a 10 minute hold time



Area Lights



POLE ACCESSORIES

CATALOG NUMBER	DESCRIPTION
Wall Mount Tenon Adaptors	
KT-WMT-S	Wall mount single 2 3/8" tenon; bronze housing
KT-WMT-S90	Wall mount single 2 3/8" tenon; 90°; bronze housing
Pole Mount Side Tenon Adaptors	
KT-PMST-SQ-S	Pole mount single 2 3/8" tenon; side mount for square pole; bronze housing
KT-PMST-R-S	Pole mount single 2 3/8" tenon; side mount for round pole; bronze housing
Pole Mount Top Tenon Adaptors	
KT-PMTT-4R-SV	Pole mount single 2 3/8" tenon; top mount vertical for 4" round pole; bronze housing
KT-PMTT-4SQ-SV	Pole mount single 2 3/8" tenon; top mount vertical for 4" square pole; bronze housing
KT-PMTT-5SQ-SV	Pole mount single 2 3/8" tenon; top mount vertical for 5" square pole; bronze housing
KT-PMTT-4SQ-S90	Pole mount single 2 3/8" tenon; top mount horizontal 90° for 4" square pole; bronze housing
KT-PMTT-4SQ-D180	Pole mount dual 2 3/8" tenon; top mount horizontal 180° for 4" square pole; bronze housing
KT-PMTT-4SQ-D90	Pole mount dual 2 3/8" tenon; top mount horizontal 90° for 4" square pole; bronze housing
KT-PMTT-4SQ-T90	Pole mount triple 2 3/8" tenon; top mount horizontal 90° for 4" square pole; bronze housing
KT-PMTT-4SQ-Q90	Pole mount quad 2 3/8" tenon; top mount horizontal 90° for 4" square pole; bronze housing
Bullhorn Adaptors	
KT-BH-SF-D180	Dual bull horn; in-line 180°; slips over 2 3/8" tenon
KT-BH-SF-T180	Triple bull horn; in-line 180°; slips over 2 3/8" tenon
KT-BH-SF-T120	Triple bull horn, 120°; slips over 2 3/8" tenon
KT-BH-SF-Q180	Quad bull horn; in-line 180°; slips over 2 3/8" tenon
KT-BH-SF-Q90	Quad bull horn, 90°; slips over 2 3/8" tenon



Dusk-to-Dawn Fixtures



COLOR AND POWER SELECT

CATALOG NUMBER	OPTICS TYPE	SELECTABLE WATTAGES	METAL HALIDE EQUIVALENT WATTAGE	LUMENS	EFFICACY	SELECTABLE COLOR TEMPS	INPUT VOLTAGE	DIMMING	CRI	HOUSING COLOR
KT-ALED60PS-D2D-WM-8CSB-VDIM	V	20W	150-250W	2800	140 lm/W	3000K, 4000K, 5000K	120-277V	0-10V	>80	Gray
		40W		5600						
		60W		8400						

DEDICATED COLOR

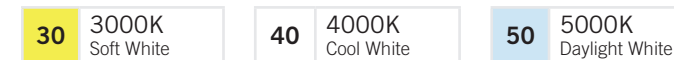
CATALOG NUMBER	OPTICS TYPE	WATTAGE	METAL HALIDE EQUIVALENT WATTAGE	LUMENS	EFFICACY	AVAILABLE COLOR TEMPS	INPUT VOLTAGE	DIMMING	CRI	HOUSING COLOR
KT-ALED40-D2D-WM-850-VDIM	V	40W	175W	5600	140 lm/W	5000K	120-277V	0-10V	>80	Gray

FIXTURE MOUNT ACCESSORIES FOR DUSK TO DAWN LIGHTS

CATALOG NUMBER	DESCRIPTION	COLOR
KT-ALED-CA-D2D-KIT	24" curved arm mounting pole for dawn to dusk area light	Gray



The products on this page with Color Select technology can be switched between these color temperatures:



The Keystone Difference

Our mission at Keystone is to change the way you think about lighting. We believe that lighting should be simple, hassle-free, and enjoyable. Keystone is Light Made Easy®.



**Fast
Quotes**



**Quick
Delivery**



**75 Year
Legacy**



**Complimentary
Lighting Layouts**



**No Questions
Asked
Return Policy**



**Free
Samples**



LIGHT MADE EASY

KEYSTONE TECHNOLOGIES

Philadelphia, PA • Phone 800.464.2680 • Fax 888.966.0556 • keystonetech.com